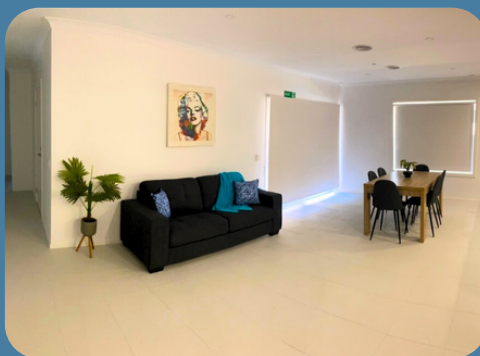
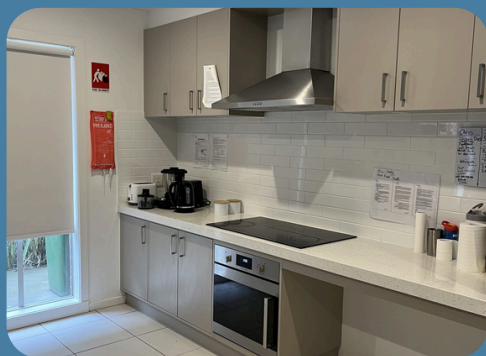




Supported Independent Living in SDA

**Lilydale, VIC**


## Seeking third housemate for friendly home

We're looking for a third housemate to join two other males in this spacious specialist disability designed home. The home features large bedrooms, each with an accessible bathroom and provision for a ceiling hoist. It also includes a spacious open-plan kitchen, dining, and living area, as well as a separate lounge or sensory room, and outdoor area.

Conveniently located near Lilydale Marketplace, the train station, and the scenic Lilydale Lake and parklands.


**High Physical Support**

**1:3 SIL**

**3 Bedroom**

**3 Bathroom**

**Find Out More**    Arrange a Meet & Greet



Call **Loretta** on 0413 404 801 or  
Call **Nextt** on 1300 369 568



Email [hellosil@nextt.com.au](mailto:hellosil@nextt.com.au)