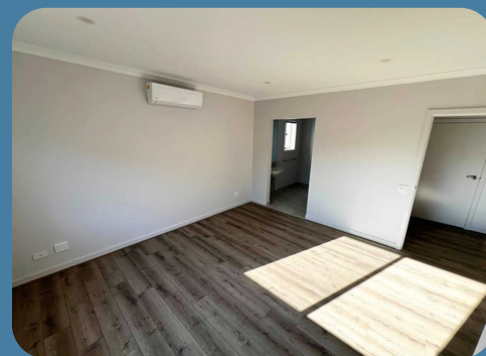




Supported Independent Living in SDA

Greenvale, VIC

Contemporary & accessible SDA living

Nestled in Melbourne's northern suburbs, this spacious SDA property offers a blend of accessibility and natural beauty, with several parks nearby

This thoughtfully designed home boasts two private bedrooms, each with its own bathroom, ensuring comfort and independence for every resident.

**Robust****1:2 SIL****2 Bedroom****2 Bathroom**

Find Out More Arrange a Meet & Greet



Call **Loretta** on 0413 404 801 or
Call **Nextt** on 1300 369 568



Email hellosil@nextt.com.au