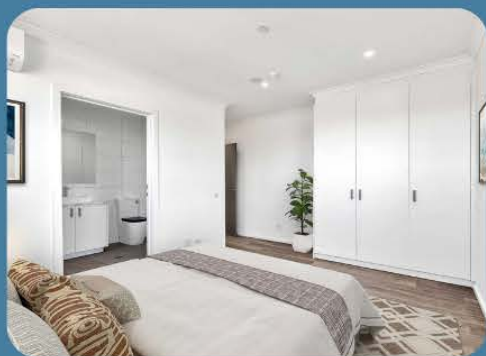




Supported Independent Living in SDA
Whittington, VIC



Spacious Improved Liveability home with modern features

Conveniently close to the bay, shops, and parks, this stunning home features 3 large bedrooms with private ensuites, a spacious open-plan living area, and a second living space for hobbies or relaxation.

The home includes fire sprinklers, heating and cooling, a dishwasher, and an outdoor area, all with a high energy efficiency rating.



Improved Liveability



1:3 SIL



3 Bedroom



3 Bathroom

Find Out More Arrange a Meet & Greet



Call **Thena** on 0485 855 857 or
 Call **Nextt** on 1300 369 568



Email hellosil@nextt.com.au