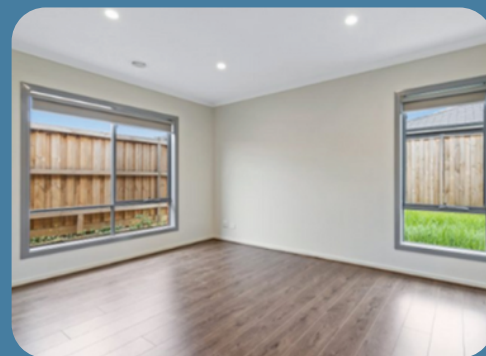




Supported Independent Living in SDA

Melton, VIC



Seeking housemate in spacious home

Looking for a housemate with SDA funding to share with two others in this generously sized home, with large bedrooms and private ensuites in all.

The zero-step design throughout, combined with quality touches, enhances the spaciousness of the home, which includes dual living zones and a modern outdoor alfresco area. Onsite Overnight Assistance



Improved Liveability



1:3 SIL



3 Bedroom



3 Bathroom

Find Out More Arrange a Meet & Greet



Call Benal on 0437 806 059 or
Call Nextt on 1300 369 568



Email hellosil@nextt.com.au