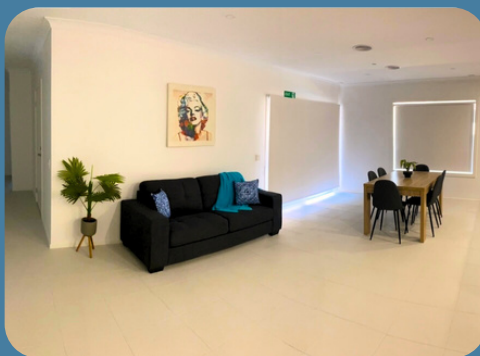




Supported Independent Living in SDA  
**Lilydale, VIC**



### Seeking third housemate for friendly home

We're looking for a third housemate to join two other males in this spacious specialist disability designed home. The home features large bedrooms, each with an accessible bathroom and provision for a ceiling hoist. It also includes a spacious open-plan kitchen, dining, and living area, as well as a separate lounge or sensory room, and outdoor area.

Conveniently located near Lilydale Marketplace, the train station, and the scenic Lilydale Lake and parklands.



**High Physical Support**



**1:3 SIL**



**3 Bedroom**



**3 Bathroom**

**Find Out More** Arrange a Meet & Greet



Call Benal on 0437 806 059 or  
Call Nextt on 1300 369 568



Email [hellosil@nextt.com.au](mailto:hellosil@nextt.com.au)