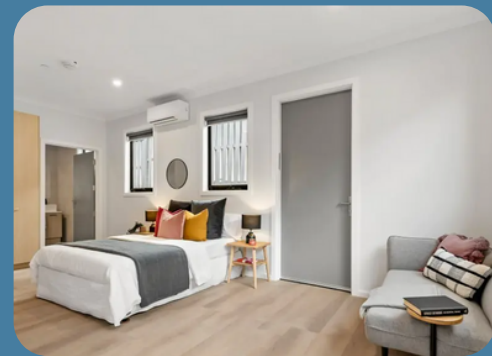
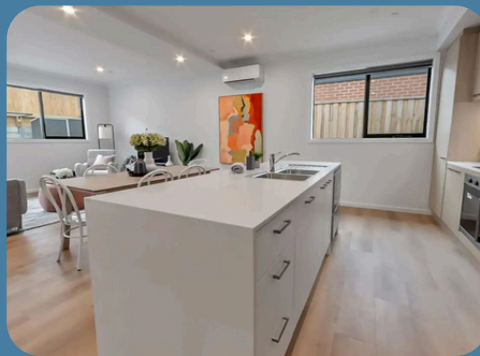




Supported Independent Living in SDA

Delacombe, VIC



Modern, energy-efficient living with support and comfort

This contemporary home is designed for two residents, offering spacious bedrooms with private ensuites and breakout rooms for added flexibility. Onsite overnight assistance ensures peace of mind.

Carefully planned to support ageing in place, this residence is ideal for individuals seeking long-term, adaptable living in a secure and welcoming environment.



Improved Liveability,
Robust



1:2 SIL



2 Bedroom



3 Bathroom

Find Out More Arrange a Meet & Greet



Call Benal on 0437 806 059 or
Call Nextt on 1300 369 568



Email hellosil@nextt.com.au